

AdvancedDiagnostics



PET FUSION

Provides the ability to combine high-resolution, anatomic images produced by CT with functional images produced by PET in an integrated image.

- » Completes I3's ability to provide visualization for all modalities on one workstation, avoiding the need to purchase a dedicated workstation only for PET Fusion analysis.

PET Fusion Features:

- » User-selectable color maps
- » Real time PET transparency manipulation
- » Automated Multi-Planar Reconstruction (MPR) for orthogonal views
- » Integrated Maximum Intensity Projection (MIP) for 3-D rotational displays.

MAXIMUM INTENSITY PROJECTION (MIP)

- » Allows production of high-resolution, 3-D reconstructions of phase-contrast MR images or similar relationally-oriented acquisitions.
- » Provides the ability to segment out anatomic regions, then to sub-select segments and to provide reconstructions of only those segments.
- » Ultra-fast algorithm allows physicians to create true sequences in real time.
- » Included as part of the basic Rational Imaging application, allowing I3's already multi-modality workstations to handle even more flexibility.

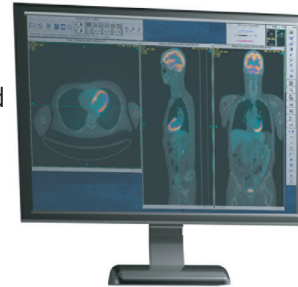
MULTI-PLANAR RECONSTRUCTION (MPR)

- » Allows recreation of additional views of 3-D data sets of an image based off a selected number of slices from the original image.

ANATOMIC TRIANGULATION

- » Provides easy cross-reference points of interest across all available series.

PET Fusion



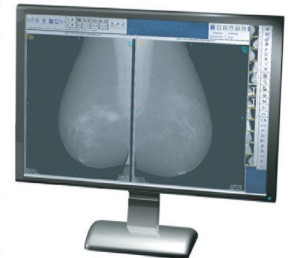
Maximum Intensity Projection (MIP)



Lumbar Spine Labeling



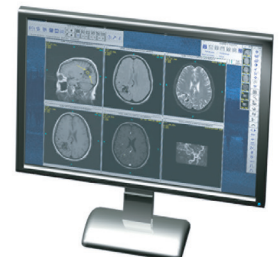
Mammogram (MG)



Multi-Planar Reconstruction (MPR)



Anatomic Triangulation



Comparison Exams

